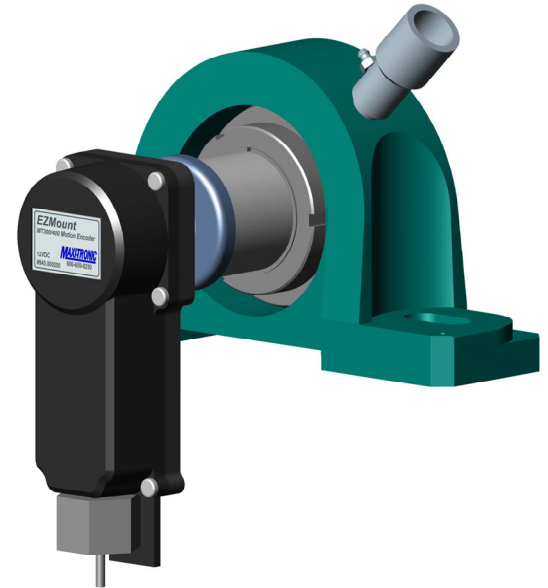




EZMount Motion Sensors Pulse Output Models Spec Sheet

Maxi-Tronic EZMount motion sensors simplify sensor placement on your bucket elevators, drag conveyors, screw conveyors, and other rotating equipment.

- Provides 1-8 (adjustable) output pulse per revolution.
- Easy Maintenance: The EZMount sensor moves with the shaft so bracket adjustment is never necessary.
- Magnetic Mounting Option: Minimize installation time and costs. Easy installation with no tapping and threading of the rotating shaft. Easily removed for maintenance.



Models:

- **PNP (Sourcing):** #945.000202 (Standard model)
 - **120VAC, N.O.:** #945.000217
- Many other models are available

Specifications:

PNP and NPN

- Operating voltage: 10-30VDC
- Supply Current: 10mA
- Load Current: 200mA max.
- Output State: N.O.
- Connection: 6.5' cable, 3 conductors
- Temperature Range: -13F to 158F

120VAC, N/O

- 20-235VAC, 50/60 Hz
- 1mA (Off-state)
- 5-300mA (On State)
- N.O. (Blue, Brown wires)
- 6.5' cable, 2 conductors
- -13F to 158F

EZMount Wiring: for #945.000202 model sensors

**EZMount
Pulse
PNP**

**MT400
Controller**

**MT600,
MaxiScan12M
Controllers**

Brown → White
Black → Black
Blue → Red and Green

12V
S (Signal)
0V

