

BeltTracker

Belt Misalignment Hazard Monitoring

Hazard Monitoring, Anytime, Anywhere

Maxi-Tronic has the industry leading controls, sensors, service and experience to provide complete hazard monitoring and control systems for your facility.

Maxi-Tronic BeltTracker™ sensors are ideal for bucket elevators, belt conveyors, rotary drums, food processing and other material handling equipment.

Maxi-Tronic BeltTracker™ in Action

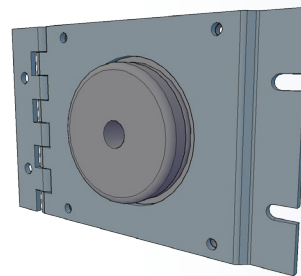
BeltTracker Misalignment Sensors are sensitive, reliable and maintenance free.

Switch-Type Mechanism for instant detection of belt misalignment conditions.

Simple Design with no internal electronics and no power supply required.

BeltTracker Specs:

- ◆ **N/O or N/C Outputs.** Momentary switch contacts:
 - N/C: #948.000720, N/O: #948.000722
 - 1" extended sensing disc, N/C: #948.000721
 - DigiMax™ digital interface, N/C: #948.DMD720
 - With hinged mounting-plate, N/C: #948.000723
- ◆ **Switch Rating:** 5A 125/250 VAC, .5A 125VDC, .25A 250VDC
- ◆ **Hinge:** Optional hinge for ease of inspection and testing.
- ◆ **Easy Testing:** Test the mechanism and the switch.
- ◆ **Dust-Ignition Proof:** CSA Class II, Div. 1, Grp E, F, G certified.
- ◆ **1/2" Condit Fitting:** Pre-wired with 10' of 18 AWG cable.



Compatible Controls for BeltTracker Sensors:

MaxiScan 12M: Advanced controller for motion and 12 sensors.

MaxiScan 24+: Up to 144 sensor inputs with audible and visual indicators, relay outputs, email/text alert messaging, web server, Andoid and iPhone support.

PLC: BeltTrackers easily connect to PLCs.

- Extremely rugged design
- Instant sensing and alarm output
- Easy installation and low maintenance

- Class II, Div. 1 CSA Certified
- Minimal moving parts
- No power supply needed
- Best feature set in the industry



US
Class II, Div 1
Groups E, F, G
CSA File 248339

MAXI-TRONIC
INCORPORATED

417 Wards Corner Rd., Loveland, OH, 45140

513-398-2500

800-659-8250

www.maxitronic.com

info@maxitronic.com