

# Relay Control Module

## Relay Control with the SafeTrack System

**Monitor Your Grain, Anytime, Anywhere.**

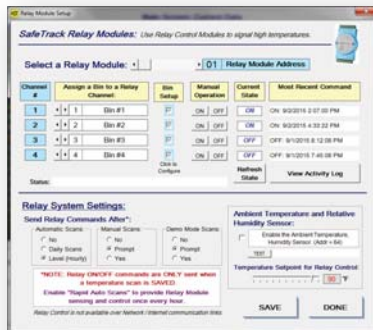
Use Relay Control Modules for automatic exhaust-fan control with the SafeTrack Grain Temperature Monitor System. Also toggle relays for PLC input or activate alert signals in response to high temperatures in your grain bin.

### Relay Control Modules in Action

Configurable setpoints to trigger relays

Easily configure the conditions to toggle relays:

- ◆ Air above grain >15° above ambient, for automatic condensation control
- ◆ High temperature in grain
- ◆ High temperature in air above grain



Assign Relays to Bins



Set Conditions for Relay Operation

- ◆ 4 discreet relays per Module
- ◆ Assign 1 Bin to each relay (4 per Module)
- ◆ Designed for exhaust fan control, PLC inputs and for visual alert indicators

- ◆ Supply: 120VAC or 12-24VDC
- ◆ SafeTrack radio or hardwired RS-485 connectivity
- ◆ 120VAC .6 Amp contacts - Dry, non-powered

