

DTL

Digital Temperature Logger

Monitor Your Grain, Anytime, Anywhere.

The DTL is a portable instrument that scans and stores grain temperatures. Using DataTrack software, the user will record company name, time, bin number, cable number, sensor number and 4 sets of temperature readings along with the reading dates.

DTL in action

- Easy to use scanning. No more hand-writing your data.
- Each thermocouple temperature is displayed.
- PC connectivity through a standard USB port.
- DataTrack software transfers your data to a PC for viewing, graphing and saving.
- OHMs measuring for cable troubleshooting.
- Easy to Configure and make changes.
- Upgrade to SafeTrack as your needs increase.



- For thermocouple temperature cables
- Dimensions: 8.5"W x 7"D x 3.5"H
- Weight: 3.4 lbs (1.4k)
- Measurement range: 20F to 230F (-28C to 110C)
- Power: 3 alkaline AA batteries (included)
- Operating temp: 32F to 105F (0C to 85C)
- System Capacity: 99 Bins, 99 Cables, 18 TC Sensors per cable.

SAFEGRAIN
INCORPORATED

417 Wards Corner Rd., Loveland, OH, 45140

513-398-2500

800-659-8250

www.safegrain.com

info@safegrain.com

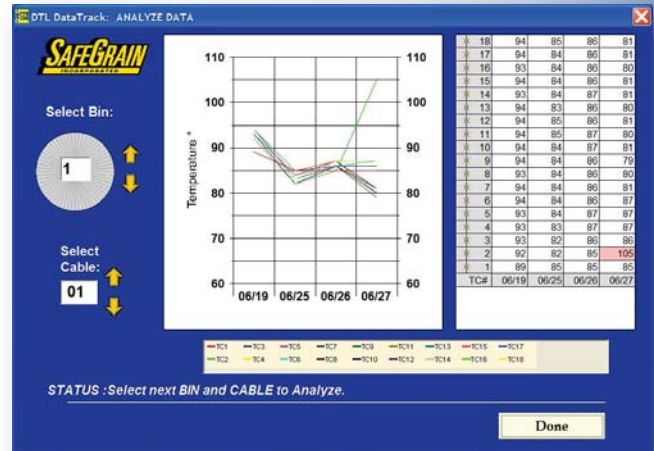
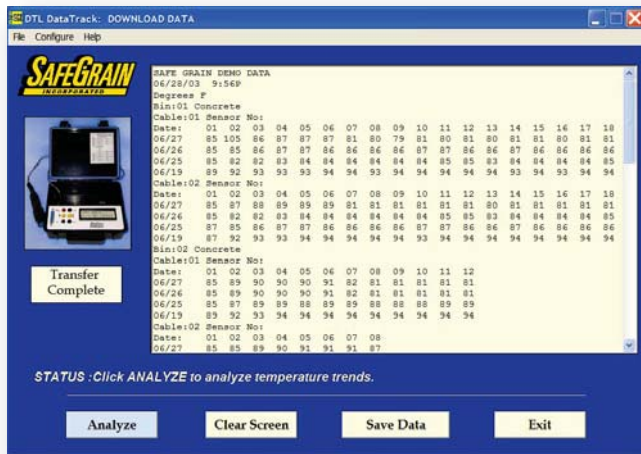
3-1-2012

DataTrack

Software to Download, Analyze, Graph and Save DTL Data

DataTrack Software

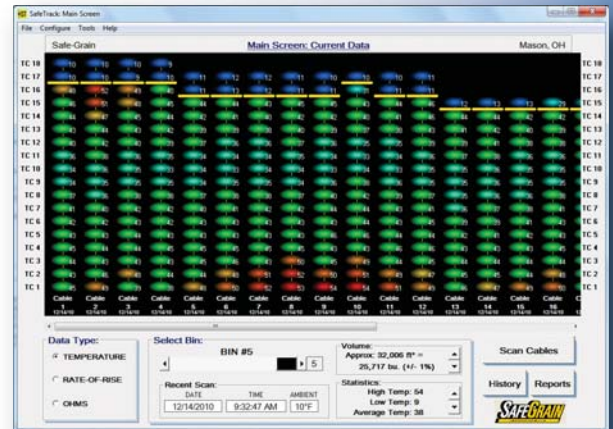
- A clean and simple interface makes downloading data to your PC effortless.
- Easy to read graphics.
- Data Graphing for quick spotting of trouble areas.
- User-configurable high-temperature setpoint



SafeTrack System

Want more features? SafeTrack is a full-featured grain monitoring system loaded with industry leading advanced features:

- Full color graphics and easy to use interface.
- Automated scanning, reporting, and alert text/email messages.
- Wireless installation. Remote scanning over the internet.
- Approximate grain level display.



SAFEGRAIN

INCORPORATED

417 Wards Corner Rd., Loveland, OH, 45140

513-398-2500

800-659-8250

www.safegrain.com

info@safegrain.com